

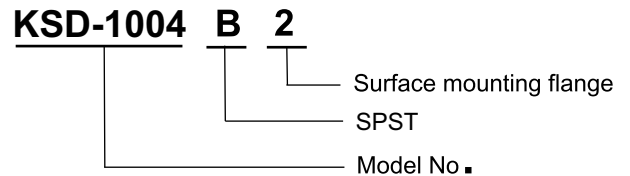
LINGTONG

3/4" Disc Bi-Metal thermostat

KSD-1004

The KSD-1004 series of 3/4" (19mm) bimetal disc temperature controls from LT offers proven reliability in a moisture resistant sealed design. The snap action of the bimetal disc provides high-speed contact separation resulting in excellent life cycle characteristics at electrical loads up to 10 amps at 250VAC and 5 amps at 250VAC. The sealed design provides moisture resistance for moisture prone environments. A wide variety of terminal, lead wire and mounting configurations are available to provide maximum design flexibility. The KSD-10 is the most popular and widely applied temperature control in refrigeration applications such as defrost termination and ice cube maker control. It is also applied in a range of heat pump and air conditioning applications..

- Moisture resistance.
- 100% TEMP & dielectric tested.
- 250V ac 5A, 250V ac 10A
- 0.187R for 3/8" Tube
- Ambient temoreatue ang -40 to 195 deg.C
- Snap-Action Automatic
- Epoxy Sealing

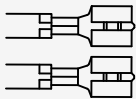


ORDER FORMAT

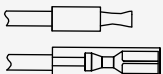
▶ TERMINAL

Leads are #18 Gauge, Wire, 105°C PVC

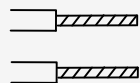
250#



Ø4.5



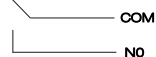
0#



▶ FUNCTION

Spdt Electrical Ratings				
Cycle Of Endurance	Volts AC	Inductive Amp Full Load	Inductive Amp Locked Rotor	Resistive Amp
100000	120	5.8	34.8	10
100000	240	2.9	17.1	5

STSP: NO

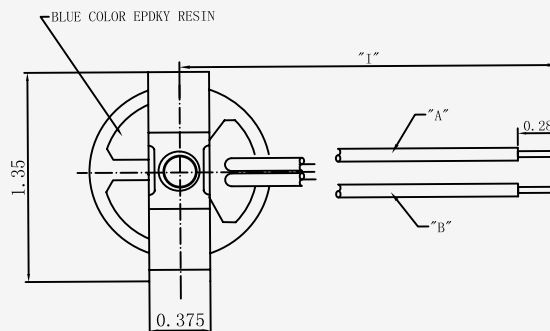


STSP: NC



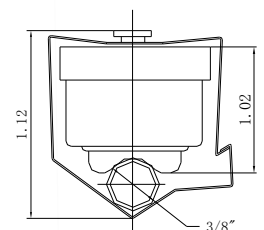
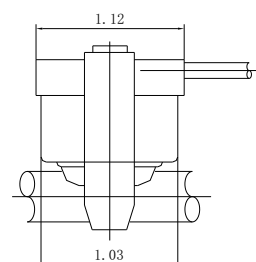
▶ DIMENSION

Tube Mounting Several different tube mountings are available (see figures). These brackets firmly attach the KSD-1004 to tubes ranging from 3/8" (Φ9.5mm) in diameter



▶ OPTIONS

TYPE	OPEN °F	CLOSE °F
L37	37	47
L45	45	25
L50	50	30
L55	55	35
L60	60	40
L70	70	50
L80	80	30
L90	90	35



Yuyao City LingTong Electric Appliance CO., LTD

No. of Linshan Town Yuyao City Zhejiang Province <http://www.lt-ele.com> E-mail: info@lt-ele.com